

MALL AT FALL CREEK

91,000 +/- Sq Ft Shopping Center

For Sale or Lease



Pad Sites (Up to 6 Acres) Available For Sale

1209 - 1257 SW 7 Highway, Blue Springs, Missouri



Estimated Population
78,174

Average Household Income
\$83,934

Five Mile Radius

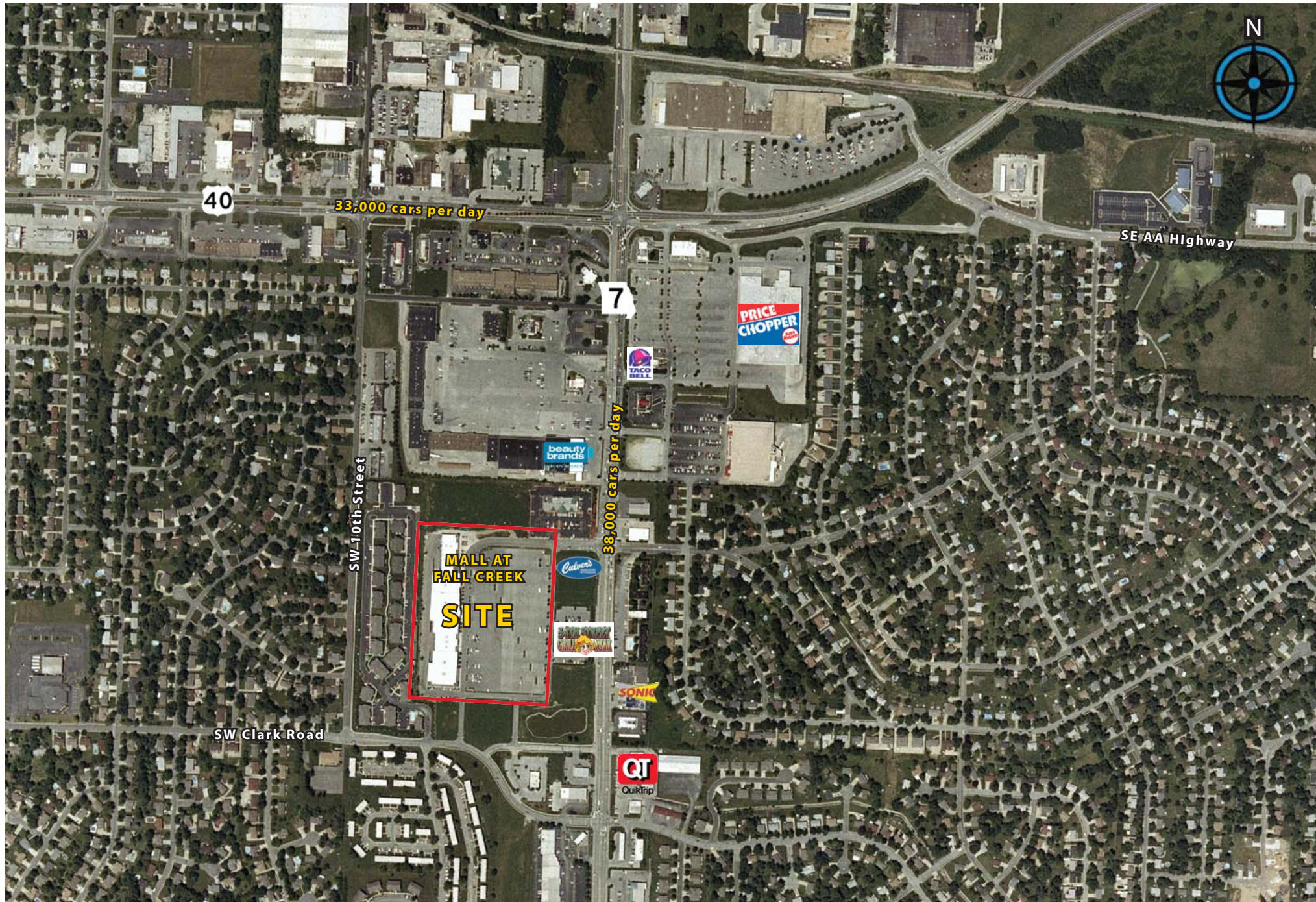
Visibility from 7 Highway

Neighboring tenants include 54th St. Restaurant, Culver's, SERC Physical Therapy, Reece & Nichols, and Club 7 Fitness

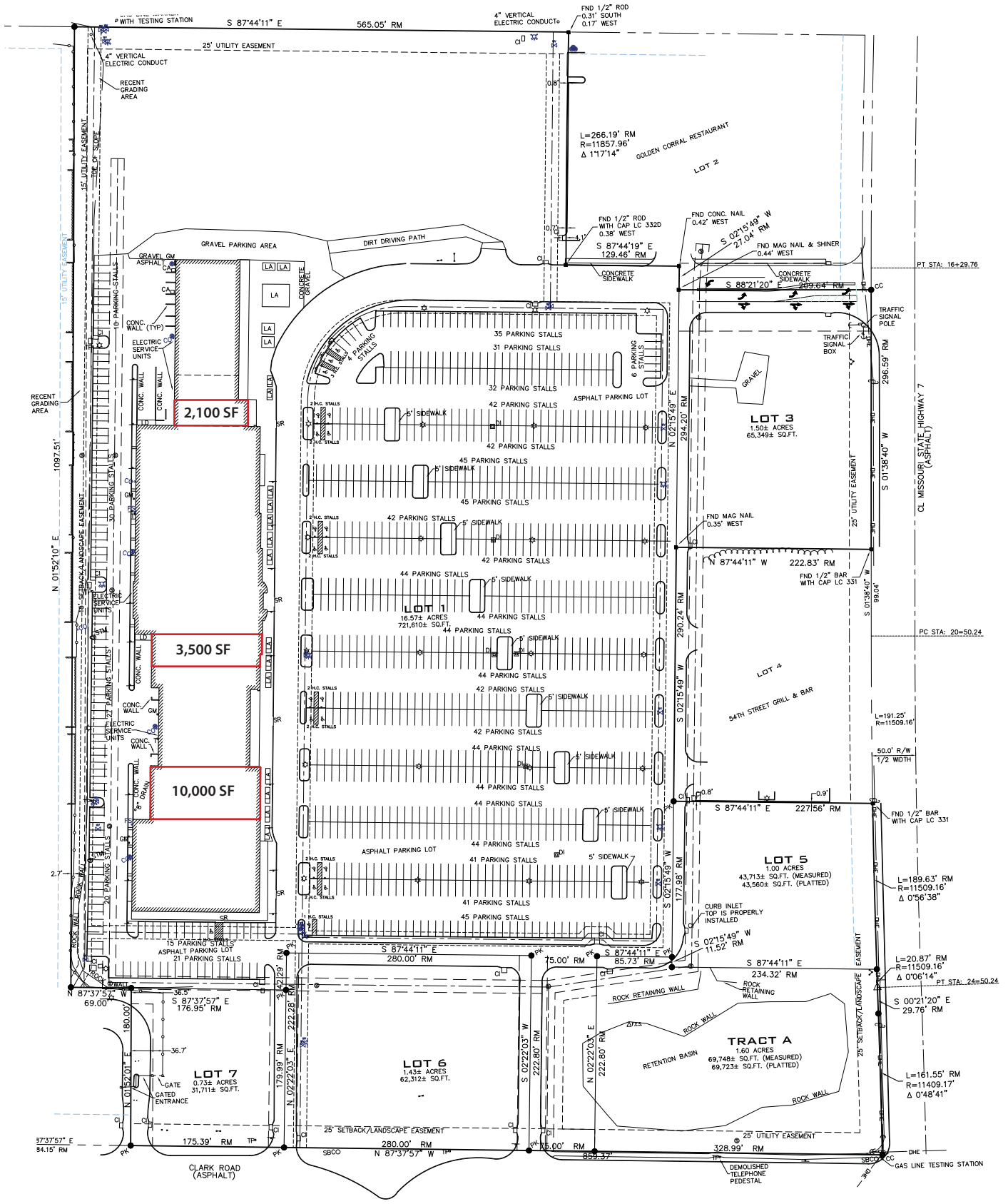
High traffic area

Intersection carries over 70,000 cars per day

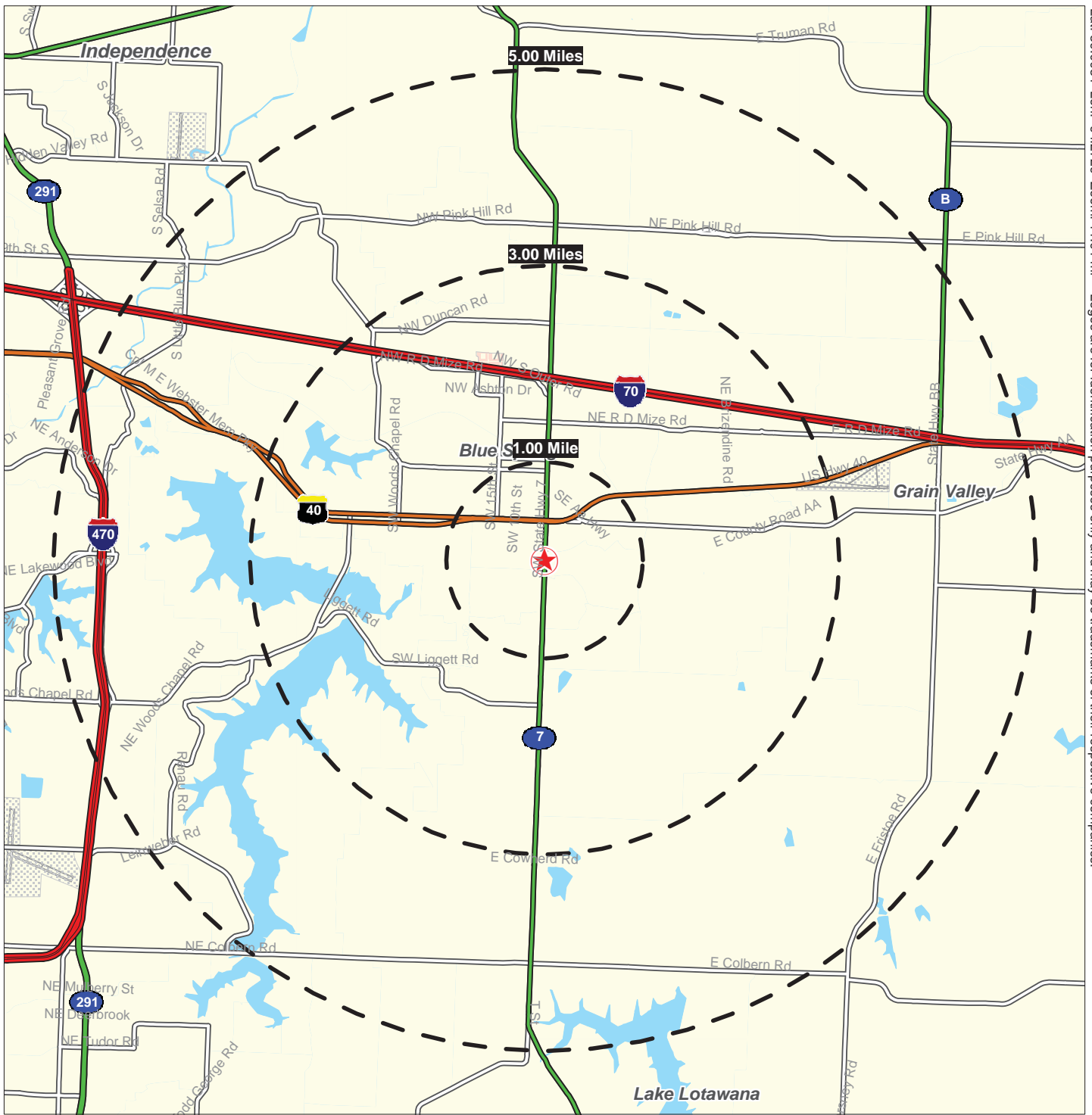
1209 - 1257 SW 7 Highway, Blue Springs, Missouri



1209 - 1257 SW 7 Highway, Blue Springs, Missouri



Lat: 39.0034 Lon: -94.2729 Zoom: 11.01 mi Logos are for identification purposes only and may be trademarks of their respective companies.



©2013, SITES USA Inc., Chandler, AZ (480) 491-1112. All Rights Reserved.

**1209-1257 SW 7 Highway
Blue Springs, Missouri**

May 2013

This map was produced using data from private and government sources deemed to be reliable. The information herein is provided without representation or warranty.



SUMMARY DEMOGRAPHIC PROFILE

2000 - 2010 Census, 2011 Estimates & 2016 Projections

Calculated using Proportional Block Groups

Lat/Lon: 39.0034/-94.27289

May 2013

RS

1209-1257 SW 7 Highway Blue Springs, Missouri		1.00 mi radius	3.00 mi radius	5.00 mi radius
POPULATION	2011 Estimated Population	10,398	45,602	78,174
	2016 Projected Population	9,637	43,402	75,704
	2010 Census Population	10,622	45,700	78,395
	2000 Census Population	10,689	42,069	64,916
	Historical Annual Growth 2000 to 2011	-0.2%	0.8%	1.9%
	Projected Annual Growth 2011 to 2016	-1.5%	-1.0%	-0.6%
	2011 Median Age	35.7	35.0	34.8
HOUSEHOLDS	2011 Estimated Households	3,879	17,374	29,567
	2016 Projected Households	3,848	17,677	30,640
	2010 Census Households	3,970	17,170	29,169
	2000 Census Households	3,771	15,407	23,502
	Historical Annual Growth 2000 to 2011	0.1%	0.6%	1.2%
	Projected Annual Growth 2011 to 2016	-0.2%	0.3%	0.7%
POPULATION BY RACE	2011 Estimated White	88.1%	87.2%	88.2%
	2011 Estimated Black or African American	5.4%	6.5%	5.9%
	2011 Estimated Asian & Pacific Islander	1.2%	1.4%	1.4%
	2011 Estimated American Indian & Native Alaskan	0.5%	0.5%	0.4%
	2011 Estimated Other Races	4.8%	4.5%	4.0%
	2011 Estimated Hispanic	4.9%	5.2%	4.8%
INCOME	2011 Estimated Average Household Income	\$ 72,327	\$ 75,826	\$ 83,934
	2011 Estimated Median Household Income	\$ 65,645	\$ 67,915	\$ 74,066
	2011 Estimated Per Capita Income	\$ 26,997	\$ 28,998	\$ 31,873
EDUCATION (AGE 25+)	2011 Elementary	1.2%	1.7%	1.7%
	2011 Some High School	4.4%	5.4%	4.7%
	2011 High School Graduate	27.9%	29.3%	28.8%
	2011 Some College	30.1%	25.8%	24.4%
	2011 Associates Degree Only	10.9%	9.0%	8.8%
	2011 Bachelors Degree Only	18.5%	19.7%	20.9%
	2011 Graduate Degree	7.0%	9.0%	10.7%
BUSINESS	Number of Businesses	605	1,746	2,598
	Total Number of Employees	6,191	18,508	27,967
	Employee Population per Business	10.2	10.6	10.8
	Residential Population per Business	17.2	26.1	30.1

This report was produced using data from private and government sources deemed to be reliable. The information herein is provided without representation or warranty.